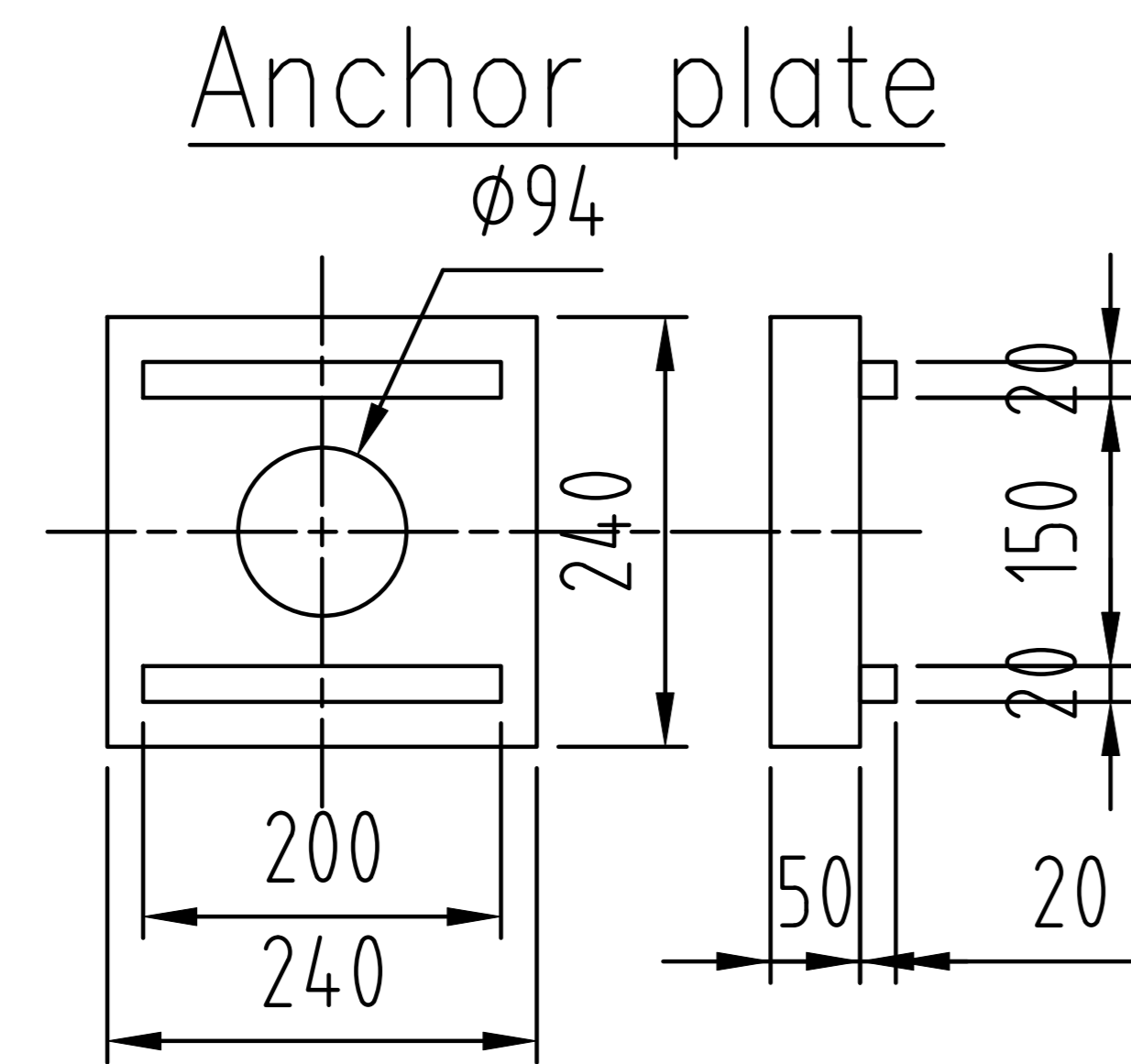
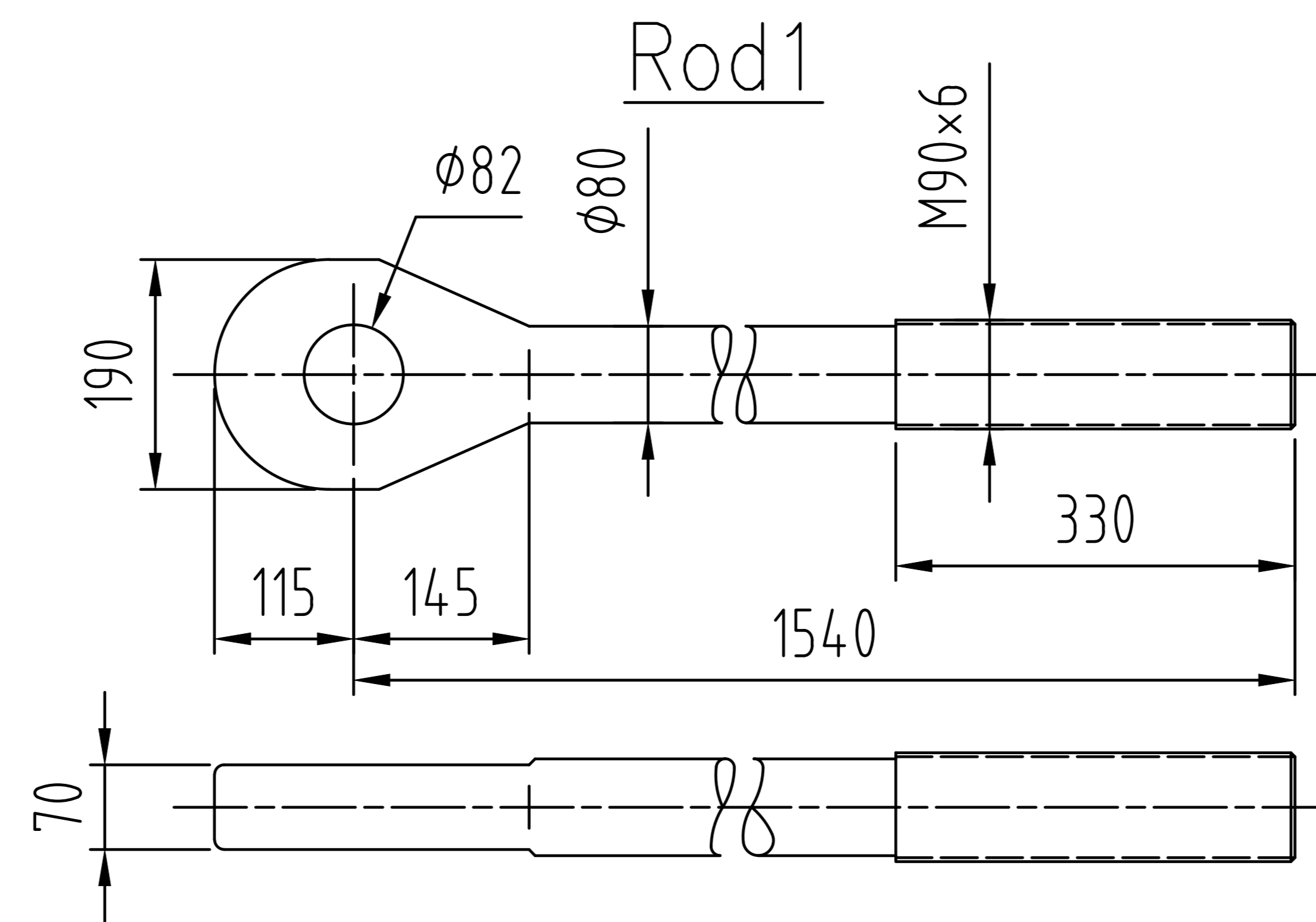
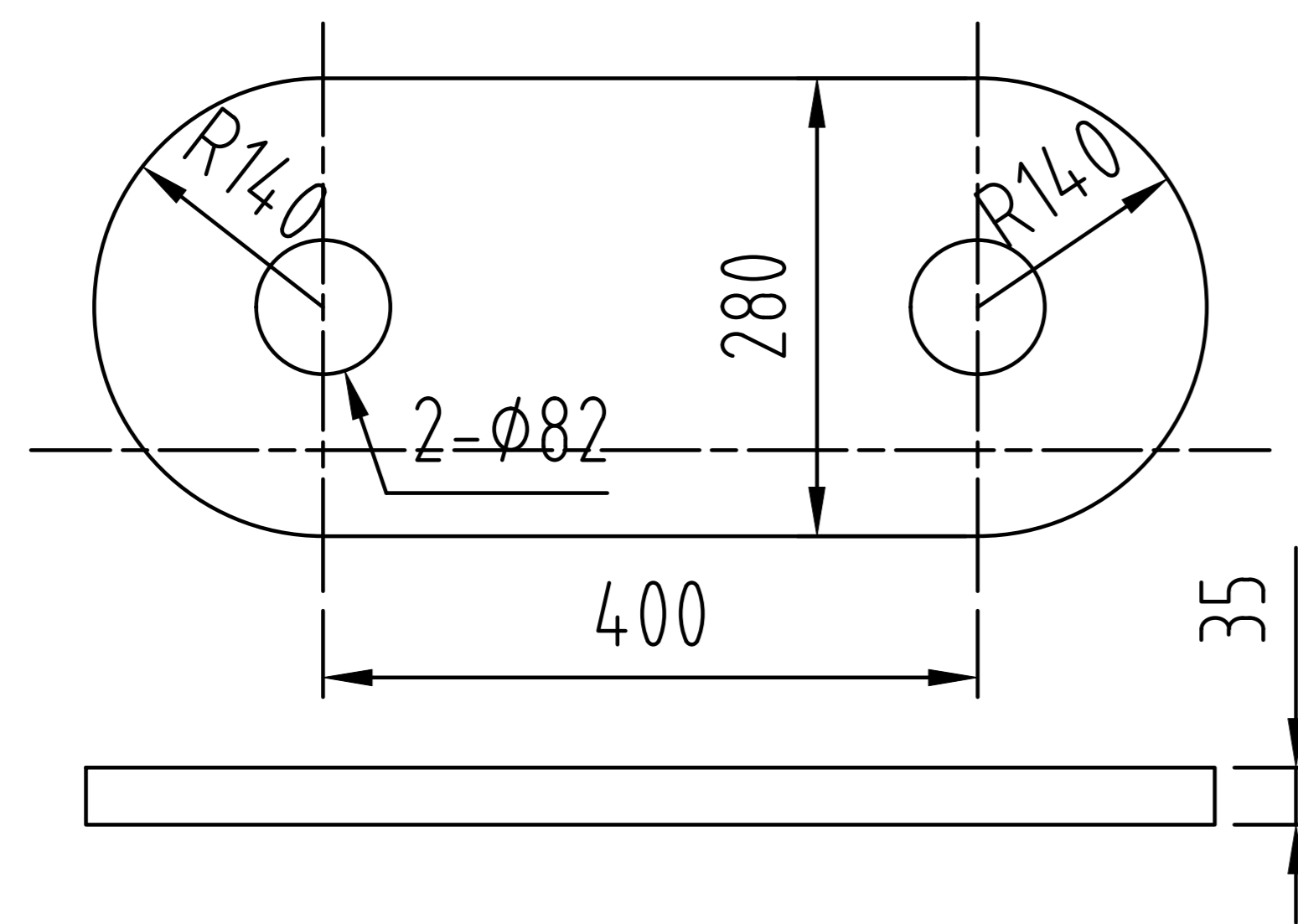


Nut

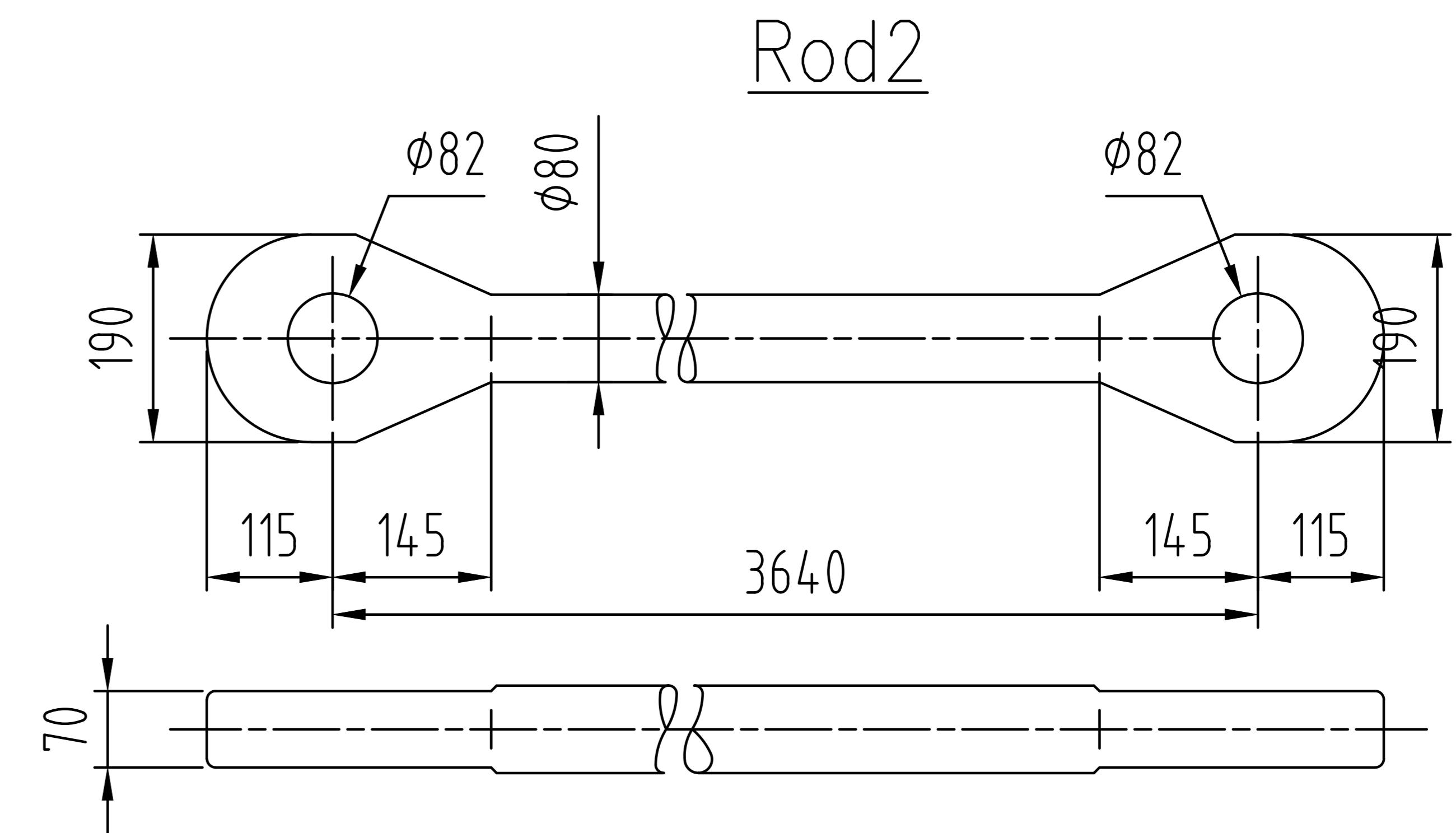


Anchor plate

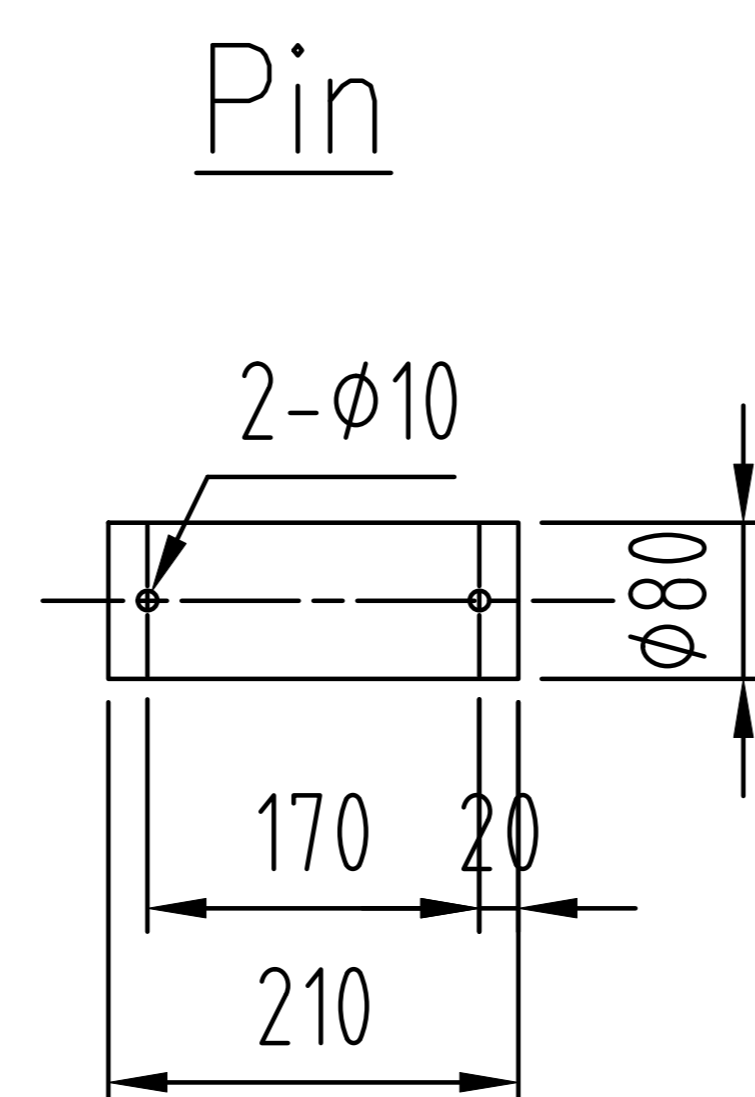
Hinge plate



Rod1



Rod2



Pin

No.	Code	Name	Qty	Material	Remark
6	GLG355-80-06	Rod2	1	Grade 355	
5	GLG355-80-05	Hinge plate	4	Grade 355	
4	GLG355-80-04	Pin	4	Grade 355	
3	GLG355-80-03	Rod1	2	Grade 355	
2	GLG355-80-02	Anchor plate	2	Q355B	
1	GLG355-80-01	Nut	4	Grade 355	

Technical requirements of rods with forged eye end:

1. Tie rod the following mechanical properties:
Upper yield strength $\geq 355\text{MPa}$, Tensile strength $\geq 470\text{MPa}$,
Percentage elongation after fracture $\geq 22\%$,
Percentage reduction of area $\geq 50\%$,
Impact strength KV2 (-20°C) $\geq 34\text{J}$;
2. The minimum theoretical yield load is 1784KN, and the minimum theoretical breaking load is 2362KN;
3. The threads is painted by oil, the other is painted by zinc epoxy primer, the thickness above 60um;

				GLG355-80-00		
				ø80 Tie rod		
Noted		Document		Date		
Design		Standard		20/6/9	NO.	Weight
Checked						615kg
Approved					CHENKANG MACHINE	